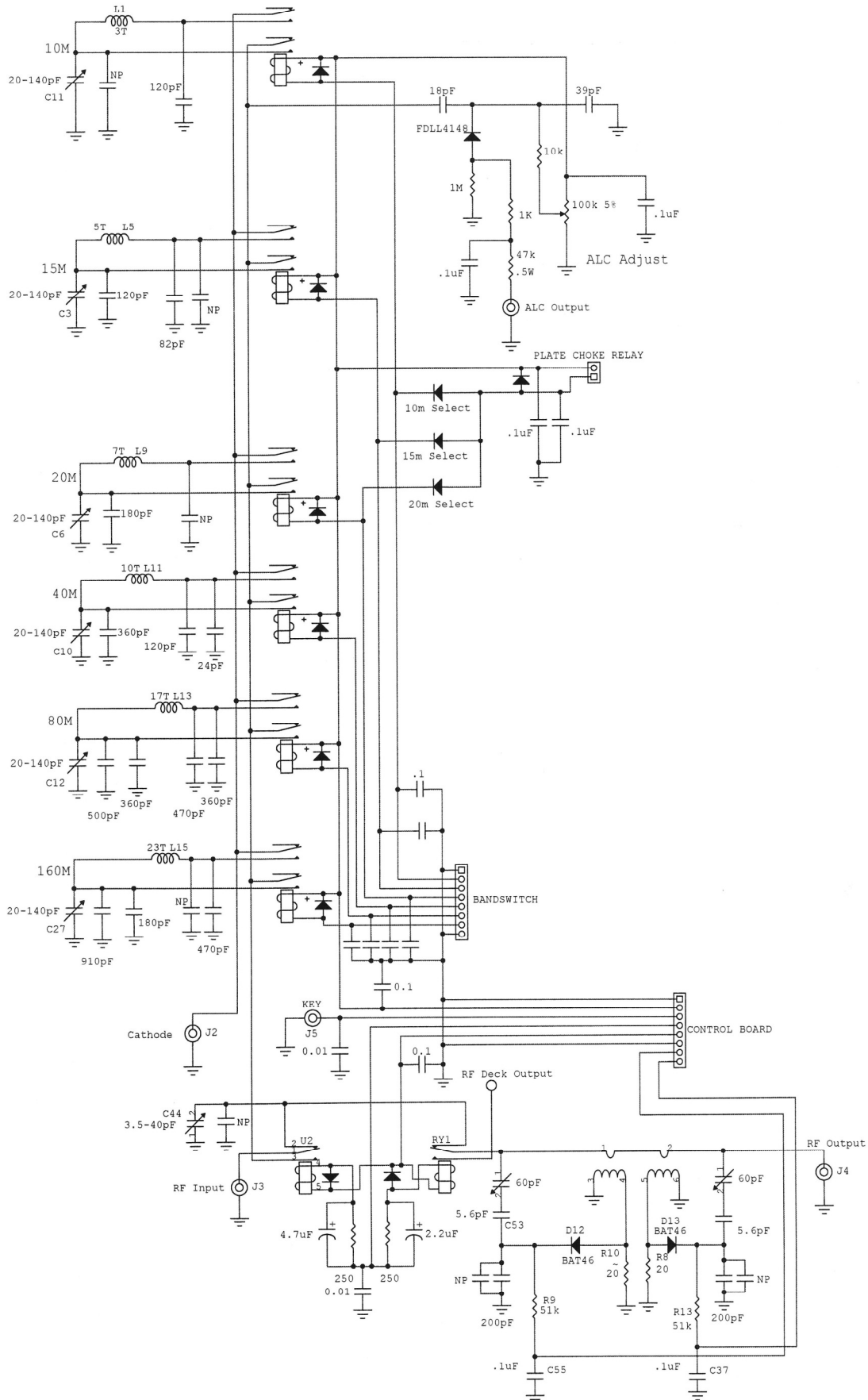
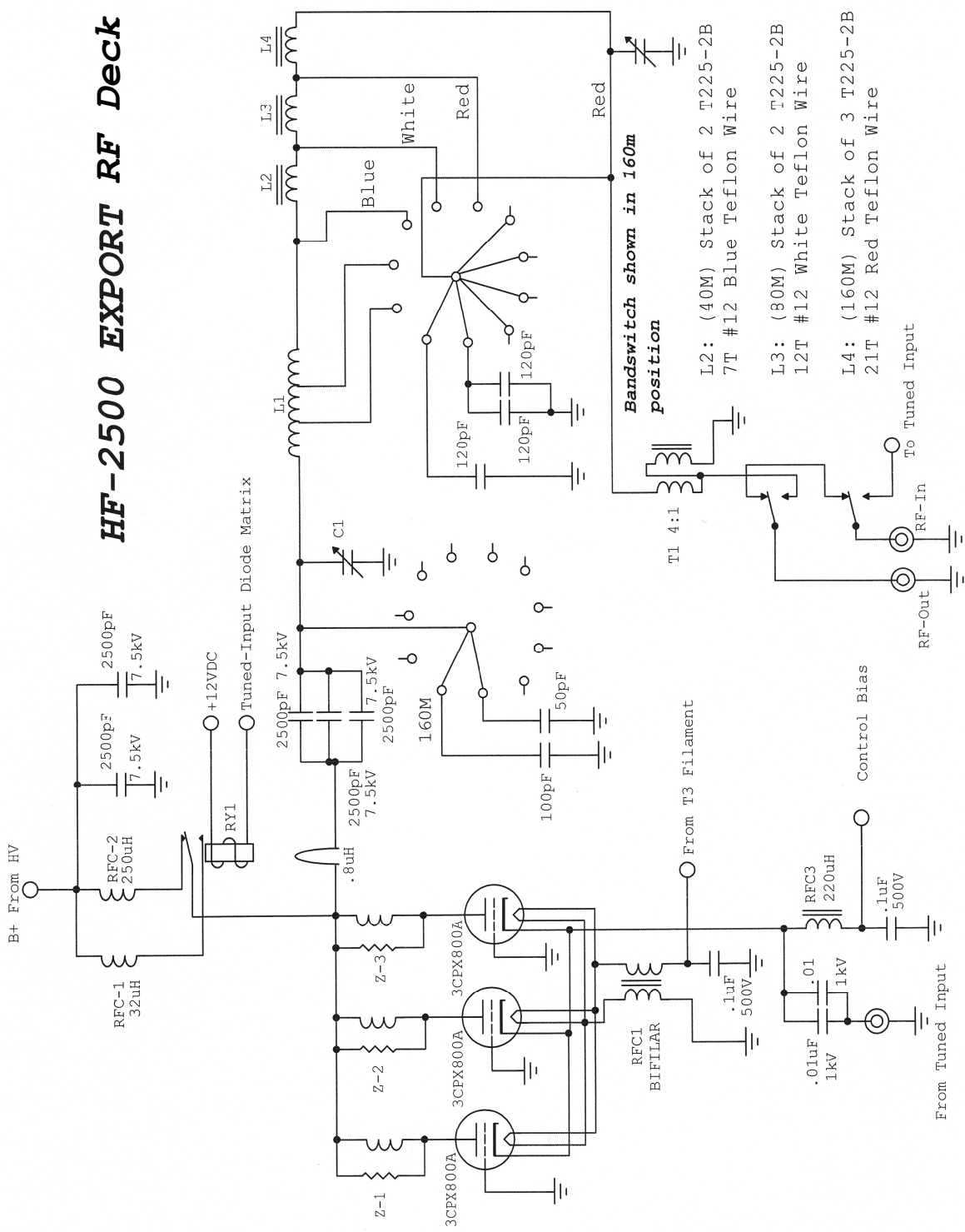


HF2500 Export Tuned Input & T/R Changeover



HF-2500 EXPORT RF Deck



Bandswitch shown in 160M position

L2: (40M) Stack of 2 T225-2B
 7T #12 Blue Teflon Wire

L3: (80M) Stack of 2 T225-2B
 12T #12 White Teflon Wire

L4: (160M) Stack of 3 T225-2B
 21T #12 Red Teflon Wire

To Tuned Input

RF-In

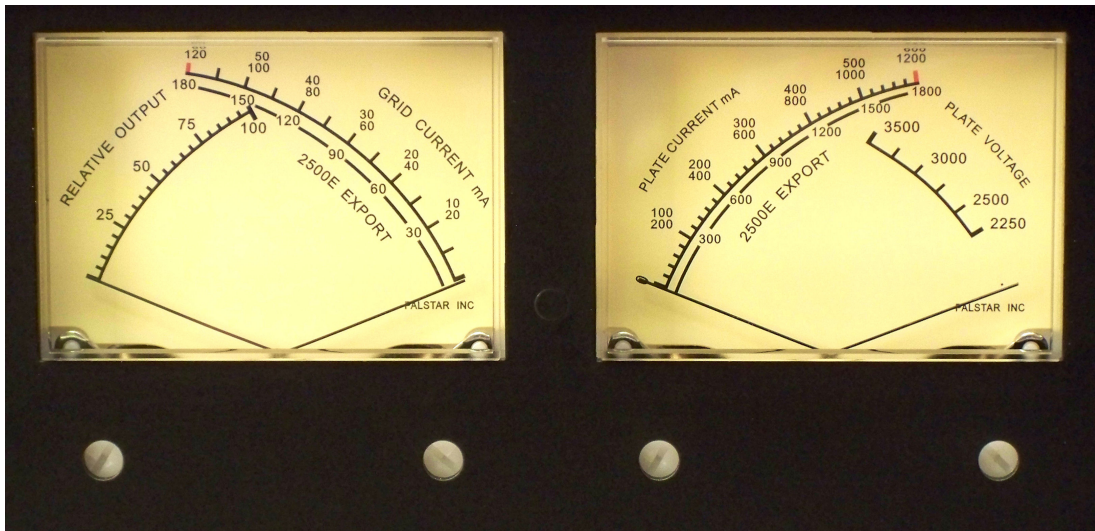
RF-Out

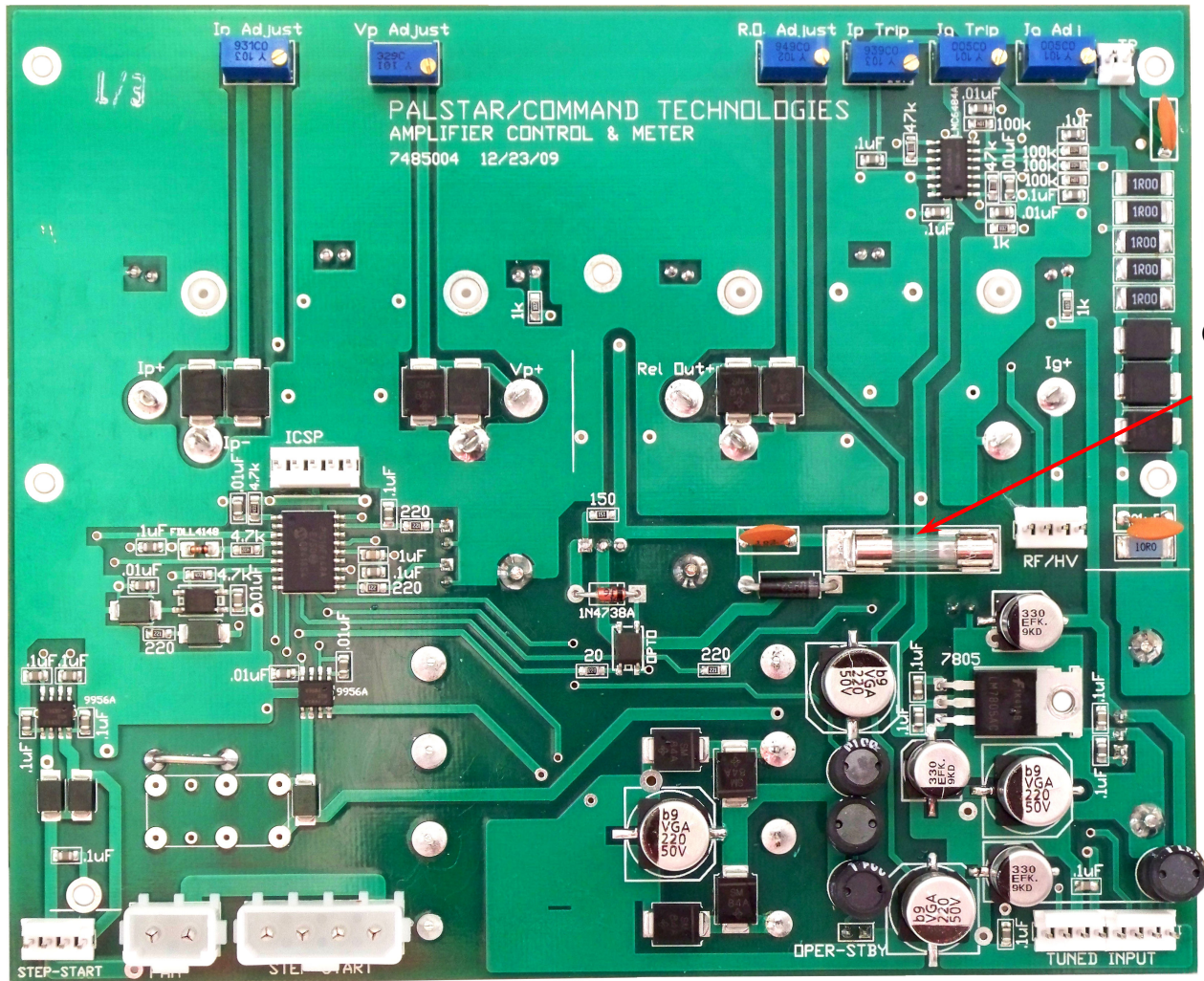
From Tuned Input

Dual Meters

Grid Current:		Scale
0-60ma	Single Tube	Top
0-120ma	Two Tubes	Mid
0-180ma	Three Tubes	Bottom

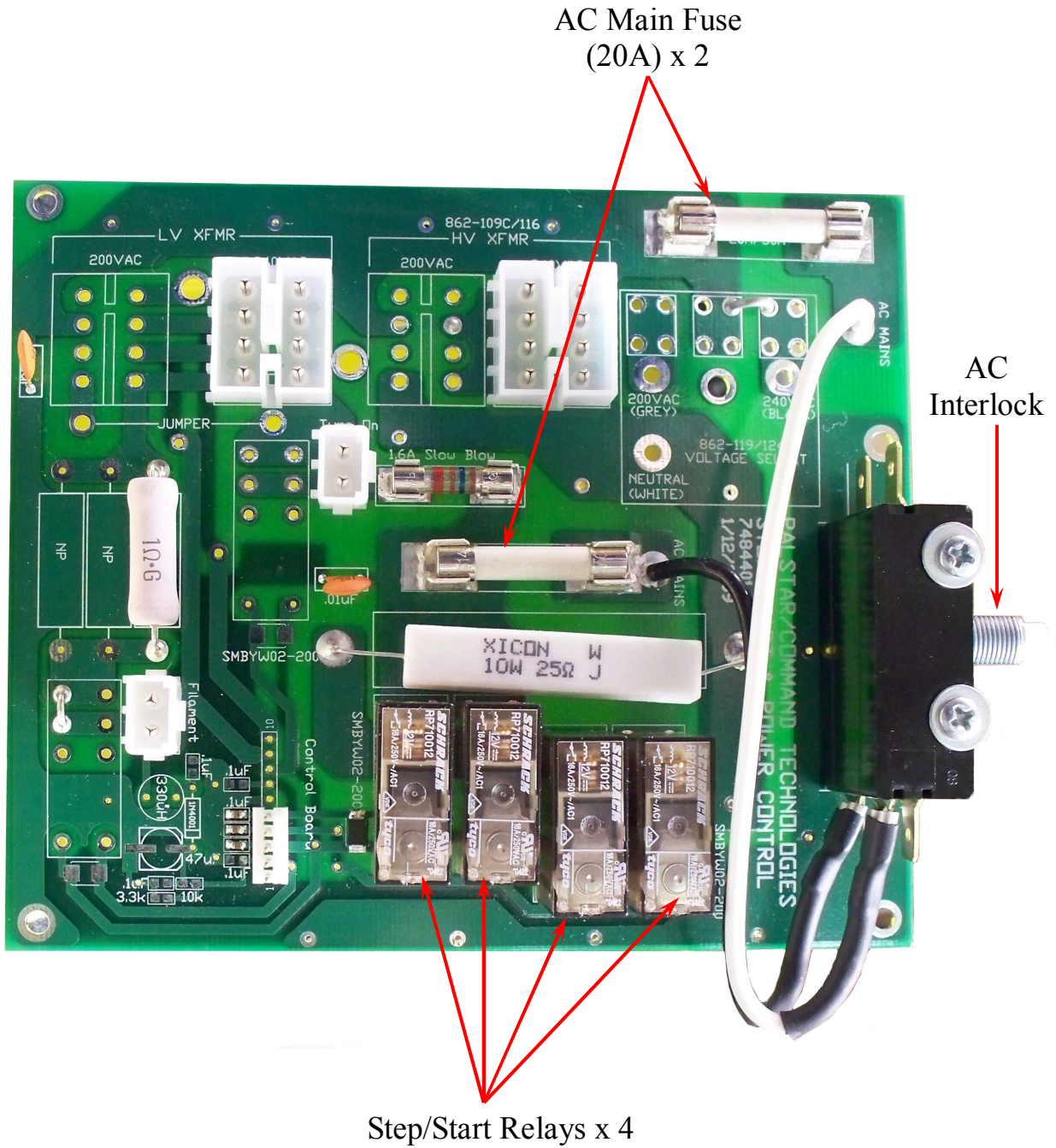
Grid Current:		Scale
0-600ma	Single Tube	Top
0-1200ma	Two Tubes	Mid
0-1800ma	Three Tubes	Bottom



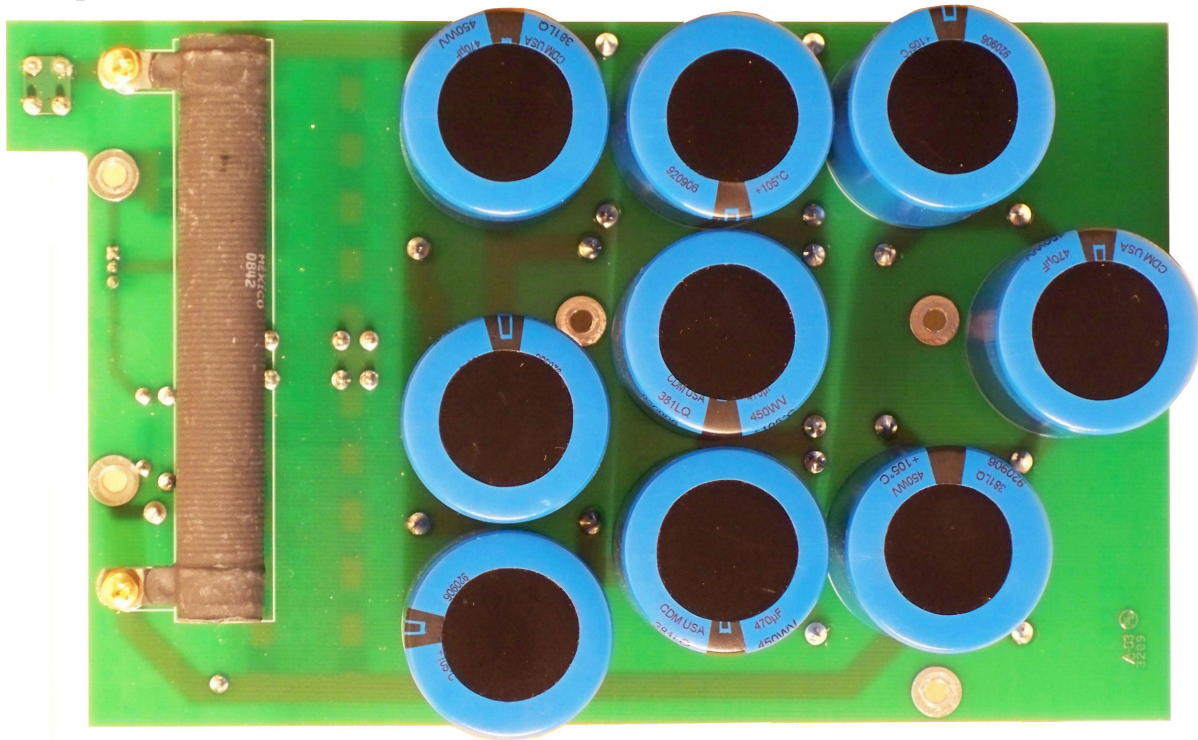


Cathode Fuse

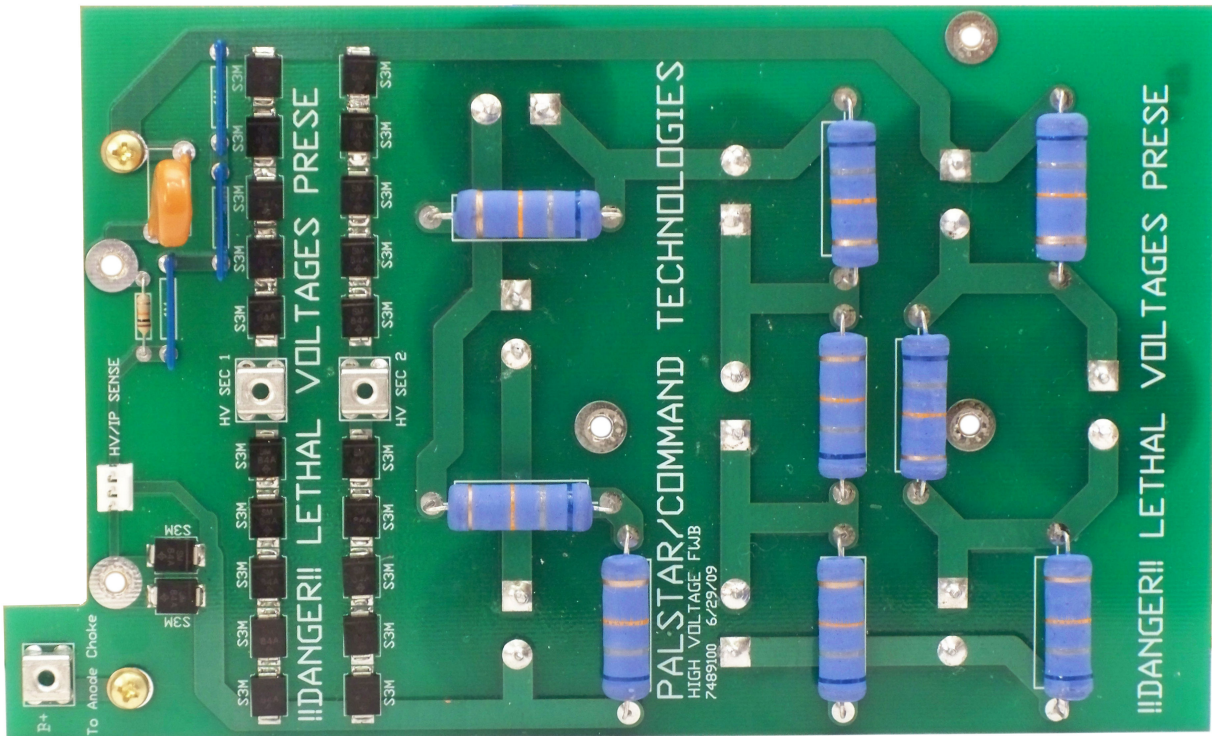
Step-Start Board



Top



Bottom





Palstar Incorporated

9676 N. Looney Rd.,
Piqua, OH 45356 USA

Customer Service and Sales Telephone:

1-800-773-7931

Fax:

1-937-773-8003

Email:

info@palstar.com